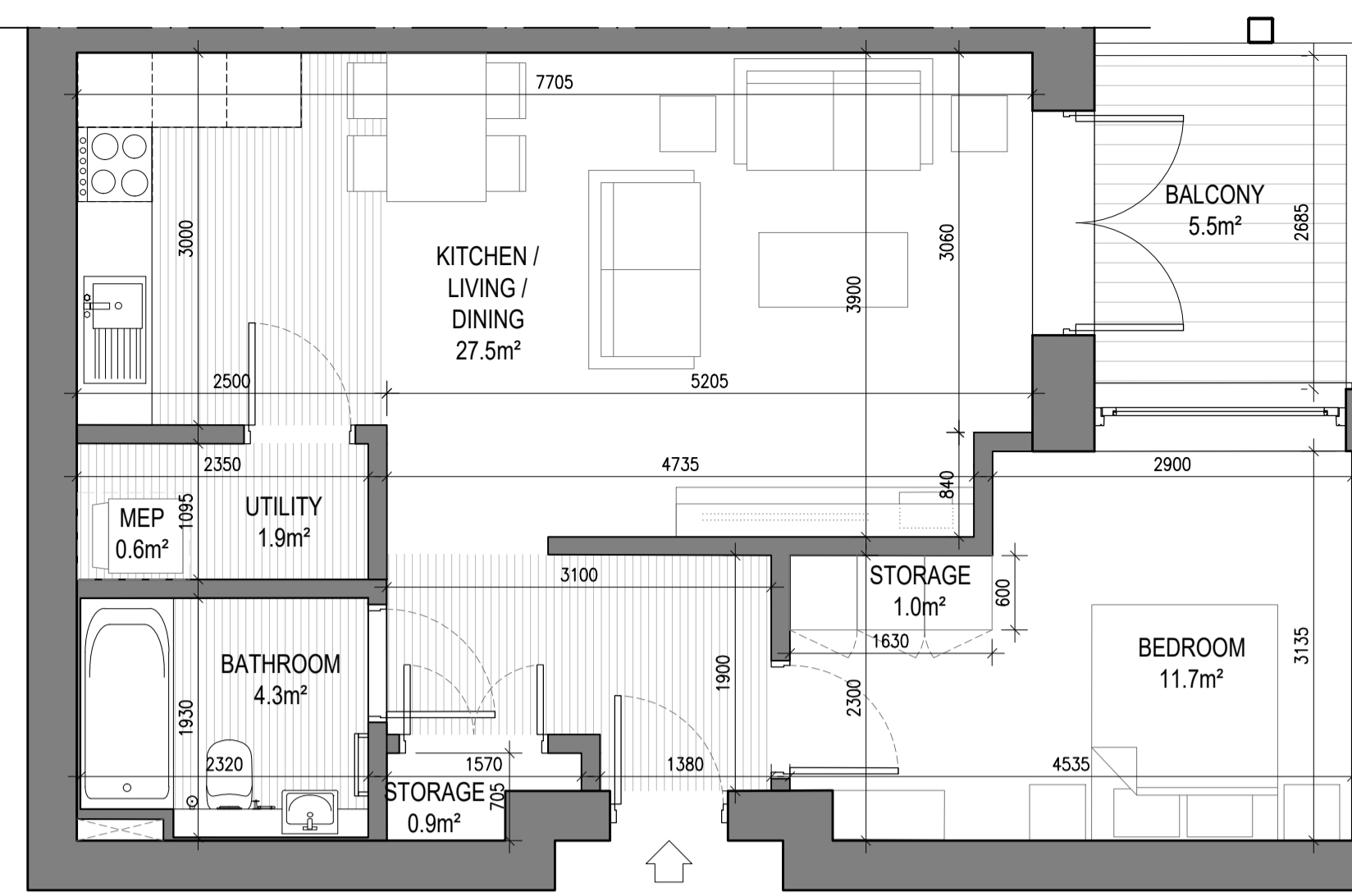


UNIT TYPE A2.3

1 Bed Unit - Floor Area: 56.09m²

	REQUIRED (m ²)	PROVIDED (m ²)
STORAGE SPACE	3.0	3.8
PRIVATE AMENITY SPACE	5.0	7.6
AGGREGATE BEDROOM AREA	11.4	12.8
AGGREGATE KITCHEN / LIVING / DINING	23.0	32.3

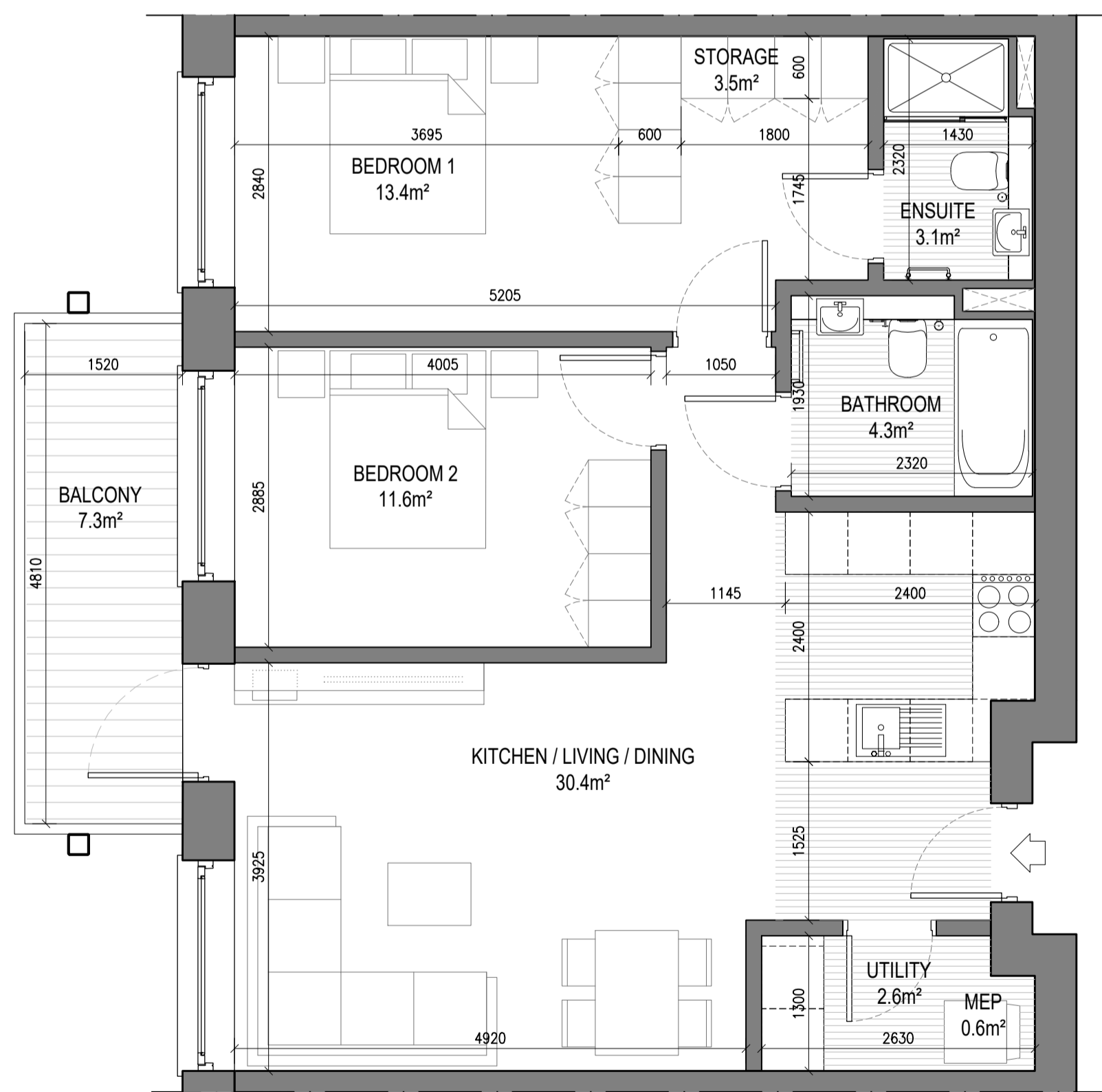


UNIT TYPE A2.6

1 Bed Unit - Floor Area: 55.96m²

	REQUIRED (m ²)	PROVIDED (m ²)
STORAGE SPACE	3.0	3.8
PRIVATE AMENITY SPACE	5.0	5.5
AGGREGATE BEDROOM AREA	11.4	11.7
AGGREGATE KITCHEN / LIVING / DINING	23.0	27.5

SCALE 1:50

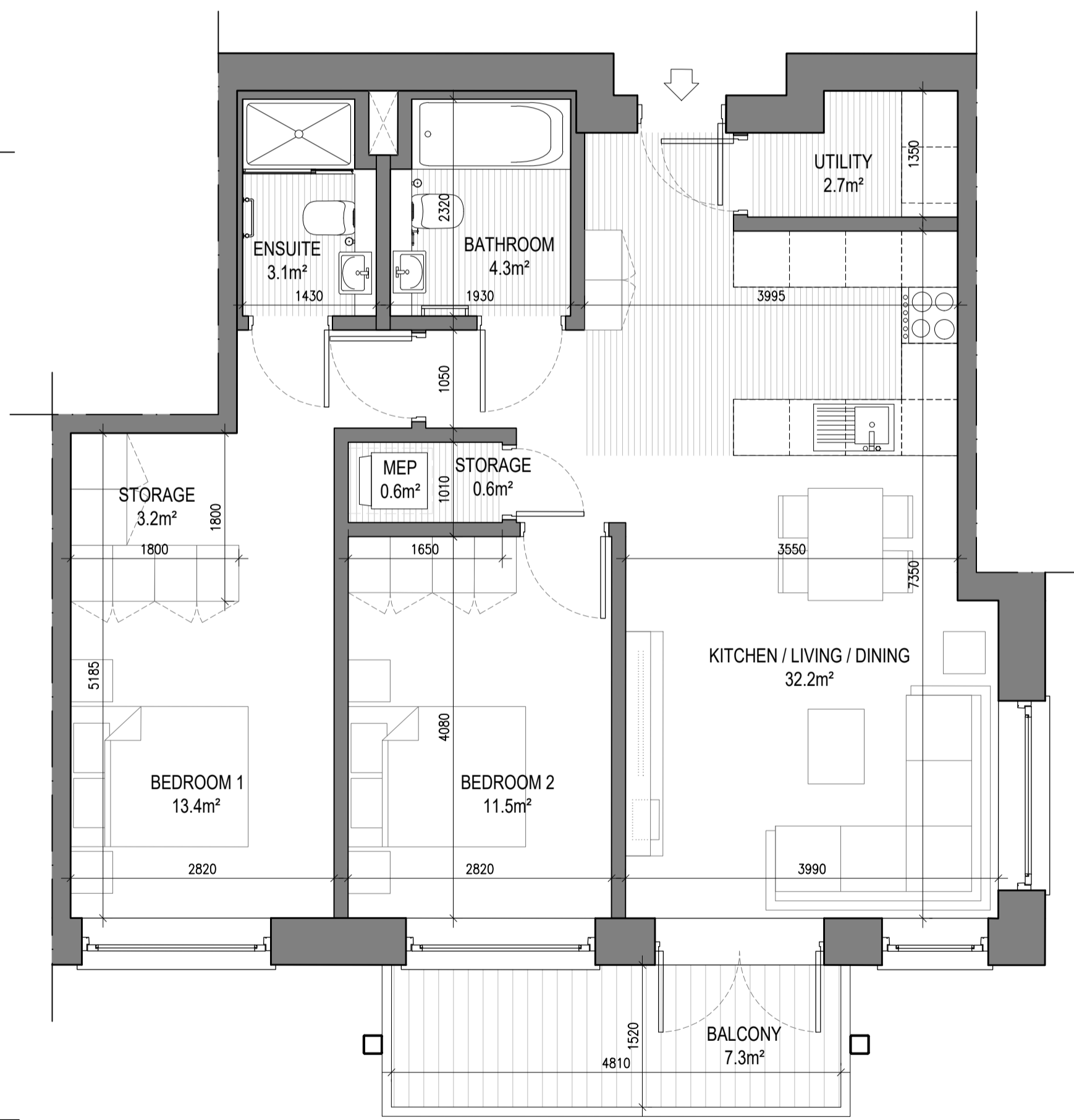


UNIT TYPE B1.1

2 Beds Unit - Floor Area: 75.49m²

	REQUIRED (m ²)	PROVIDED (m ²)
STORAGE SPACE	6.0	6.1
PRIVATE AMENITY SPACE	7.0	7.3
AGGREGATE BEDROOM AREA	24.4	25.0
AGGREGATE KITCHEN / LIVING / DINING	30.0	30.4

NOTE: 1. UNITS 406, 506, 416, 516, 426, 526, 436, 536, 446 & 546 LAYOUT IS MIRRORED NORTH TO SOUTH
2. UNITS 303, 313, 323, 333 & 342 LAYOUT IS MIRRORED EAST TO WEST

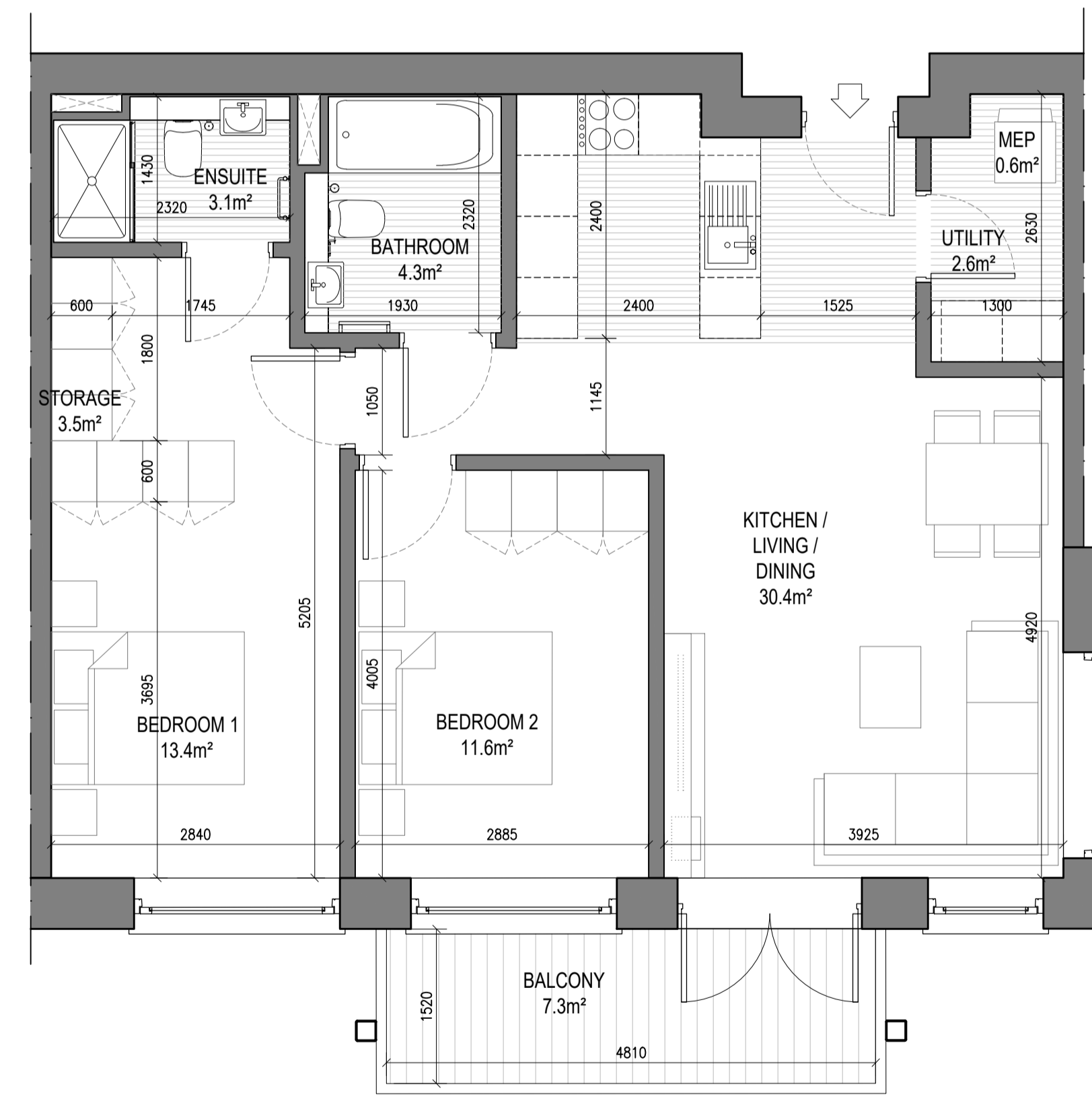


UNIT TYPE B1.2

2 Beds Unit - Floor Area: 77.79m²

	REQUIRED (m ²)	PROVIDED (m ²)
STORAGE SPACE	6.0	6.5
PRIVATE AMENITY SPACE	7.0	7.5
AGGREGATE BEDROOM AREA	24.4	24.9
AGGREGATE KITCHEN / LIVING / DINING	30.0	32.2

NOTE: UNITS 315, 325, 335, 344 & 354 LAYOUT IS MIRRORED EAST TO WEST

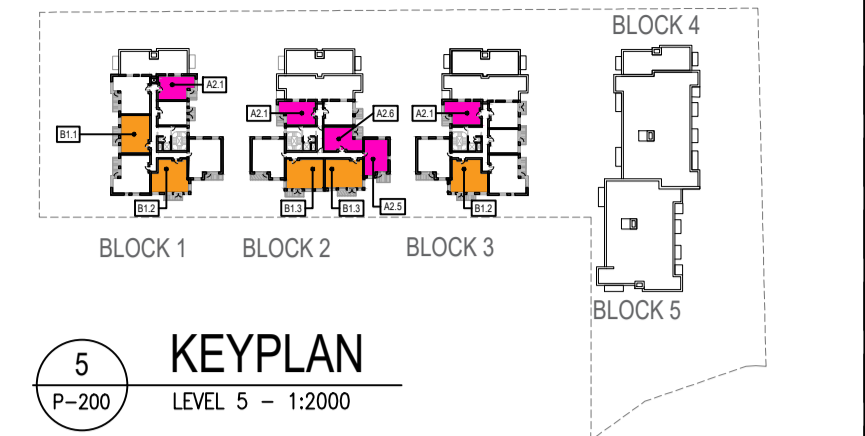


UNIT TYPE B1.3

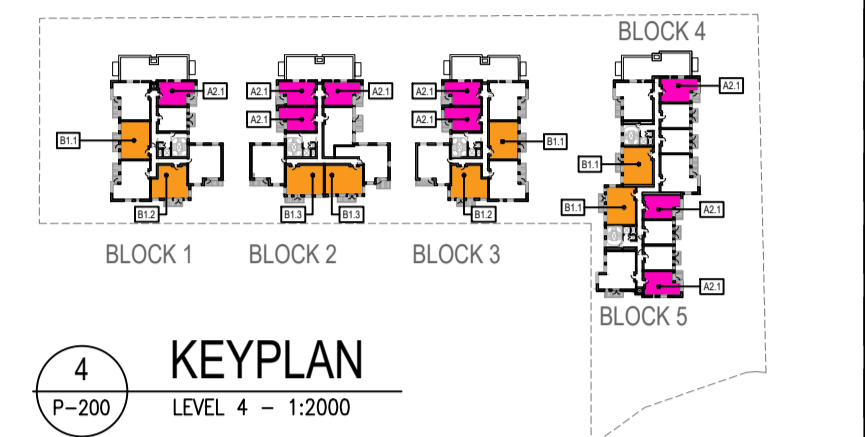
2 Beds Unit - Floor Area: 75.49m²

	REQUIRED (m ²)	PROVIDED (m ²)
STORAGE SPACE	6.0	6.1
PRIVATE AMENITY SPACE	7.0	7.3
AGGREGATE BEDROOM AREA	24.4	25.0
AGGREGATE KITCHEN / LIVING / DINING	30.0	30.4

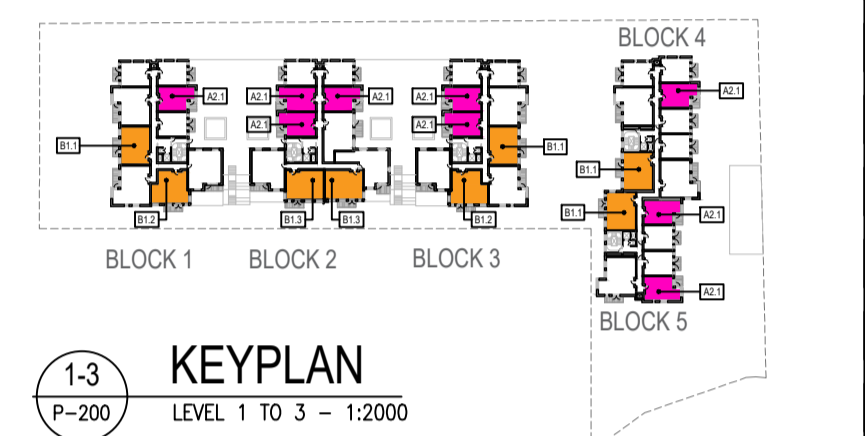
NOTE: UNITS 213, 223, 233, 243 & 253 LAYOUT IS MIRRORED EAST TO WEST



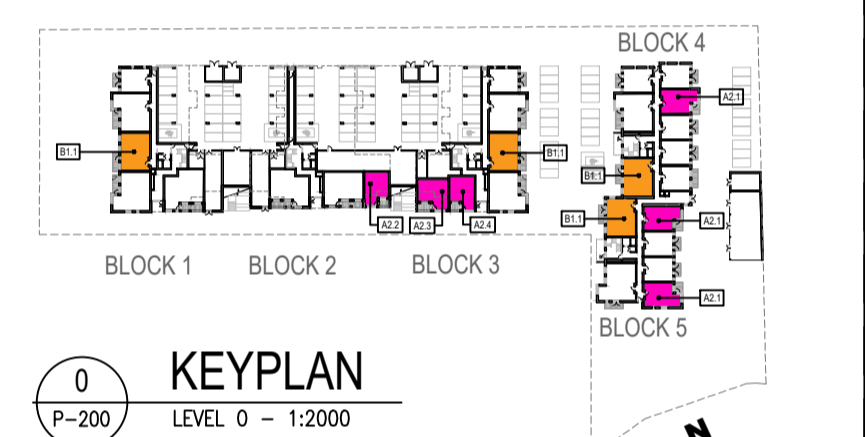
KEYPLAN
LEVEL 5 - 1:2000



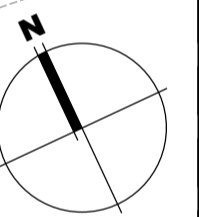
KEYPLAN
LEVEL 4 - 1:2000



KEYPLAN
LEVEL 1 TO 3 - 1:2000



KEYPLAN
LEVEL 0 - 1:2000



Notes
1. Copyright Reserved
2. Work to agreed dimensions only. Do not scale drawing
3. The contractor is responsible for checking all levels and dimensions on site and shall refer all discrepancies to the Architect
4. Where appropriate, for details of r.c. structure, or mechanical and electrical details, see Engineers drawings
5. Proprietary items shall be fixed in strict accordance with manufacturers instructions.
6. Sizes of proprietary items shall be checked with manufacturer.
7. The contractor shall be responsible for the coordination of structure, finishes and services.

Issue Status	
Progress	
Planning Application	
Fire Cert	
Disability Cert	
Tender	
Construction	
As Built	
Information Only	

No.	Date	Revision	Initials
01	08/03/22	First Issue (Draft)	BKD
02	10/03/22	Issued for final revision	BKD
03	11/03/22	Issued for Planning	BKD

Project	Carlisle Site, Kimmage Residential Development
Drawing Title	Proposed Unit Types - Internal Layouts - Sheet 2 of 4
Drawing No	6269-P-202
Scale	1:50@A1
Rev	03
Drawn	BKD
Date	26/08/21

6-7 HARCOURT TERRACE, DUBLIN 2, IRELAND
t +353-1-678 2400 f +353-1-678 7366
www.bkd.ie
bkdarchitects
BURKE-KENNEDY DOYLE