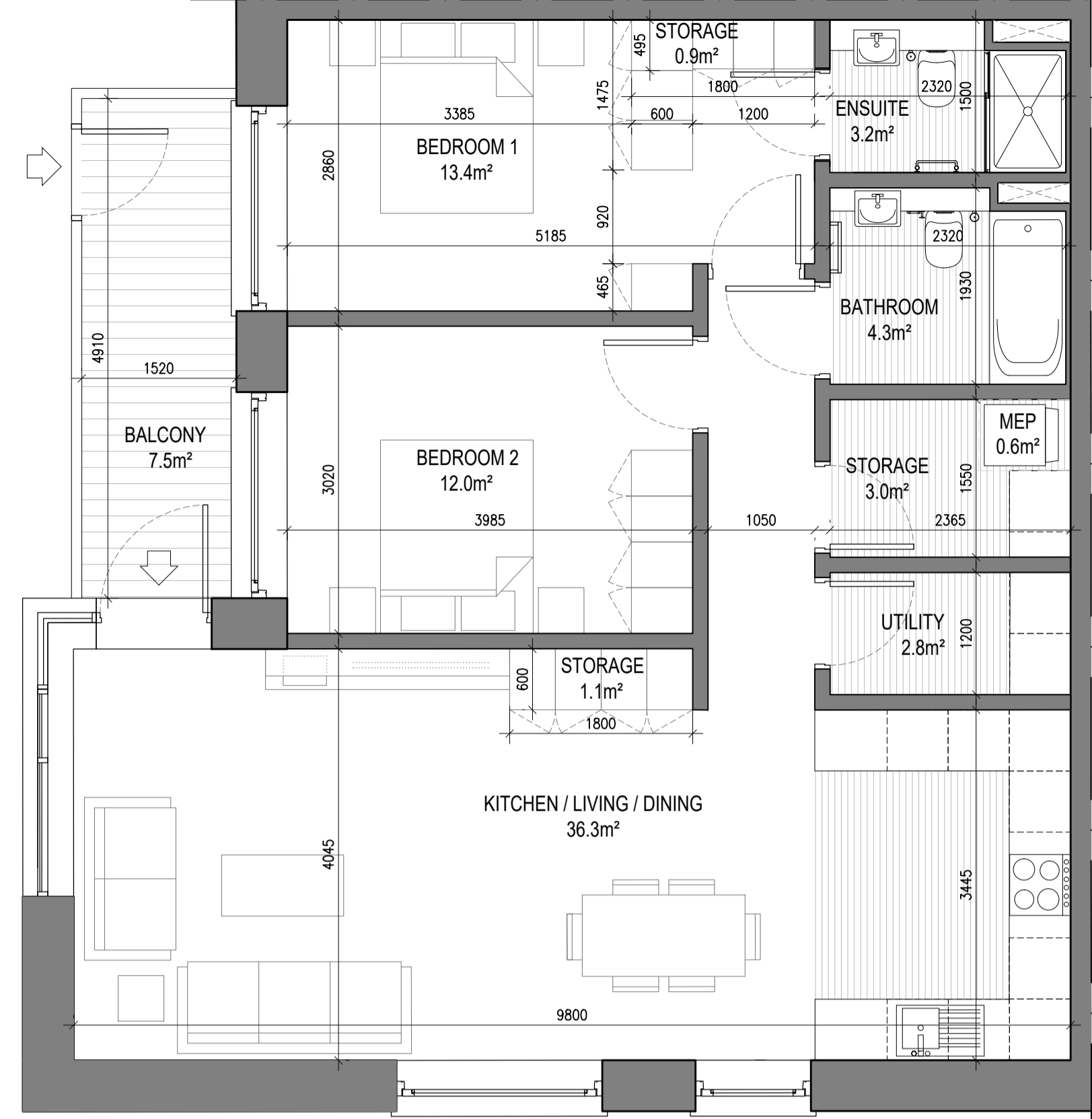


UNIT TYPE B2.1

2 Beds Unit - Floor Area: 83.68m² SCALE 1:50

- NOTE: 1. UNITS 505, 515, 525, 535 & 545 LAYOUT IS MIRRORED NORTH TO SOUTH
 2. UNITS 302, 312, 322, 332 & 341 LAYOUT IS MIRRORED EAST TO WEST
 3. UNITS 415, 425, 435 & 445 LAYOUT IS ROTATED 180 DEGREES

	REQUIRED (m ²)	PROVIDED (m ²)
STORAGE SPACE	6.0	6.5
PRIVATE AMENITY SPACE	7.0	7.5
AGGREGATE BEDROOM AREA	24.4	25.9
AGGREGATE KITCHEN / LIVING / DINING	30.0	34.5

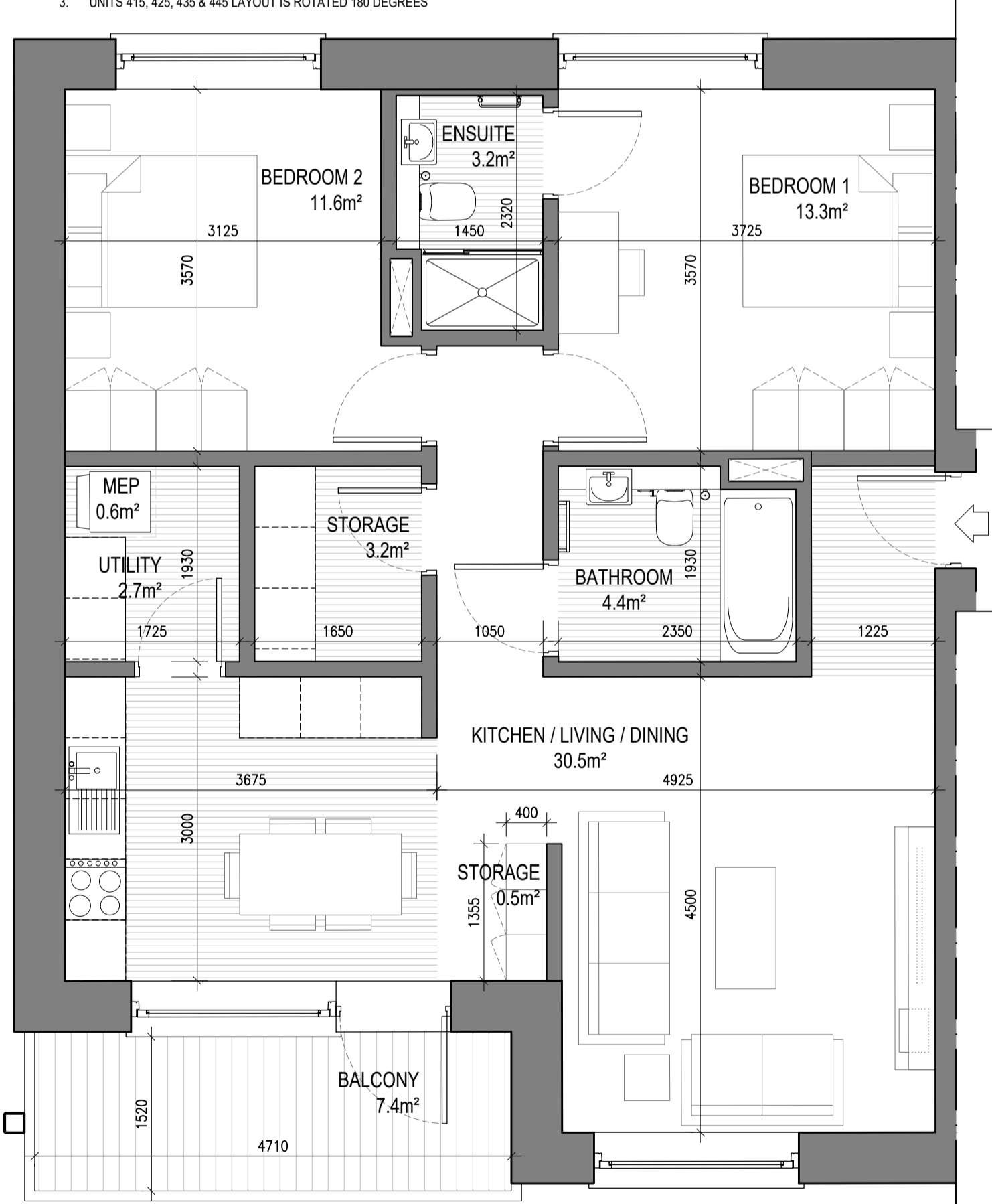


UNIT TYPE B2.4

2 Beds Unit - Floor Area: 87.19m² SCALE 1:50

- NOTE: UNIT 304 LAYOUT IS MIRRORED EAST TO WEST

	REQUIRED (m ²)	PROVIDED (m ²)
STORAGE SPACE	6.0	7.8
PRIVATE AMENITY SPACE	7.0	7.5
AGGREGATE BEDROOM AREA	24.4	25.4
AGGREGATE KITCHEN / LIVING / DINING	30.0	36.3



UNIT TYPE B2.2

2 Beds Unit - Floor Area: 81.22m² SCALE 1:50

- NOTE: UNITS 111, 121, 131, 141 & 151 LAYOUT IS MIRRORED EAST TO WEST

	REQUIRED (m ²)	PROVIDED (m ²)
STORAGE SPACE	6.0	6.4
PRIVATE AMENITY SPACE	7.0	7.4
AGGREGATE BEDROOM AREA	24.4	24.9
AGGREGATE KITCHEN / LIVING / DINING	30.0	30.5

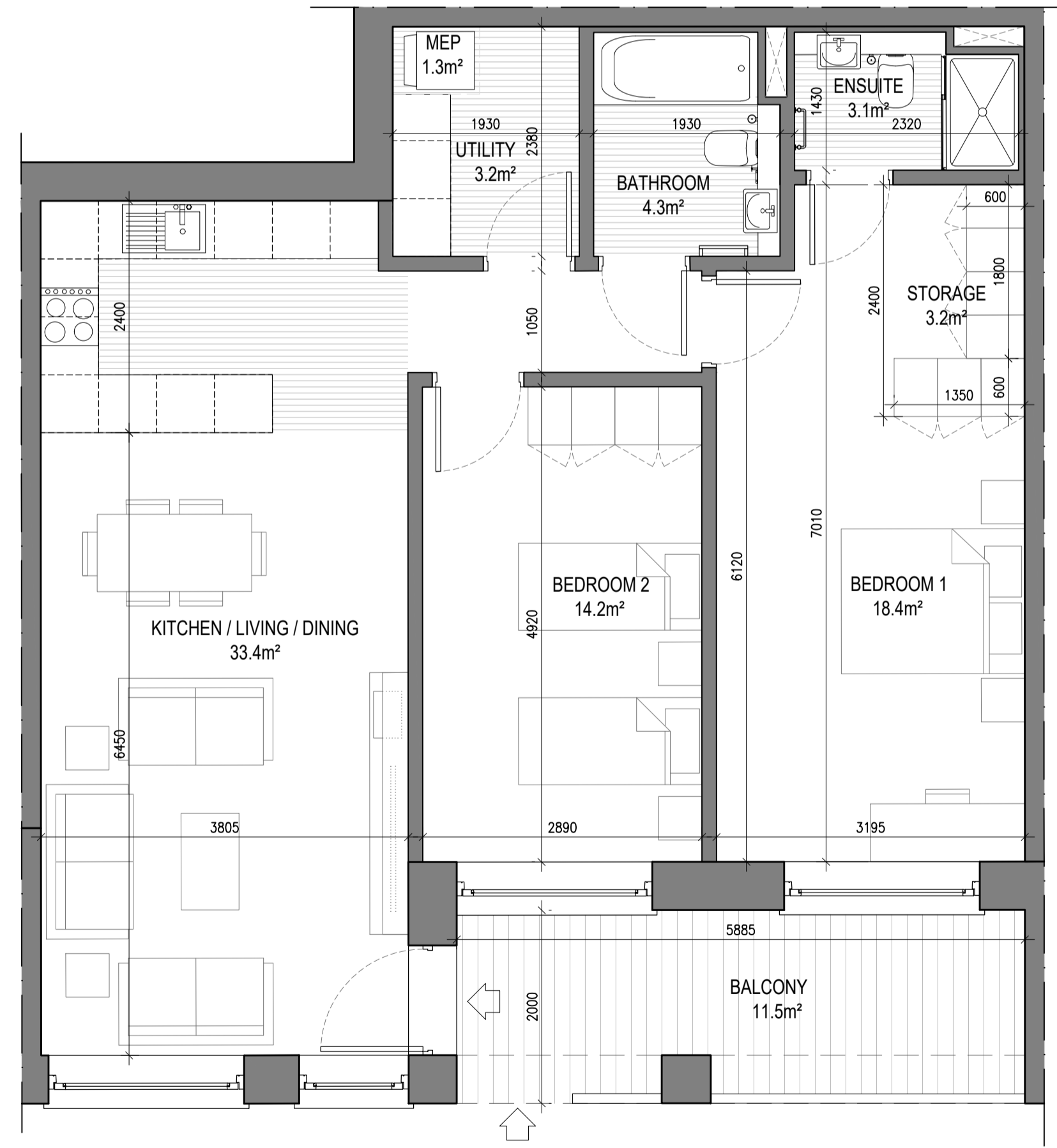


UNIT TYPE B2.3

2 Beds Unit - Floor Area: 86.10m² SCALE 1:50

- NOTE: UNITS 314, 324, 334, 343 & 353 LAYOUT IS MIRRORED EAST TO WEST

	REQUIRED (m ²)	PROVIDED (m ²)
STORAGE SPACE	6.0	6.4
PRIVATE AMENITY SPACE	7.0	7.5
AGGREGATE BEDROOM AREA	24.4	24.9
AGGREGATE KITCHEN / LIVING / DINING	30.0	35.5

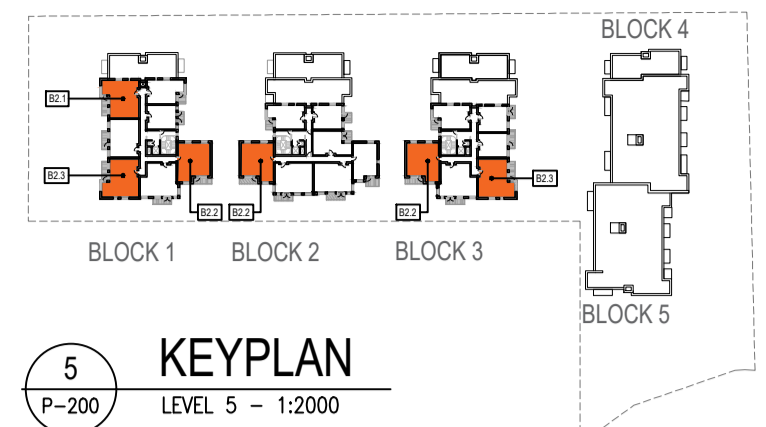


UNIT TYPE B2.5

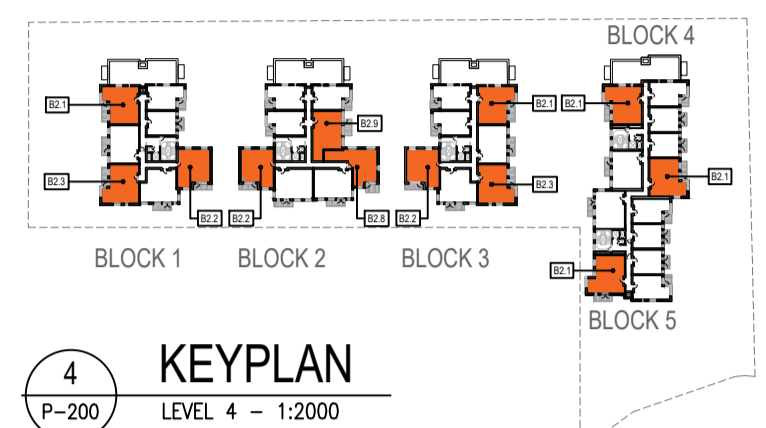
2 Beds Unit - Floor Area: 89.17m² SCALE 1:50

- NOTE: UNITS 111, 121, 131, 141 & 151 LAYOUT IS MIRRORED EAST TO WEST

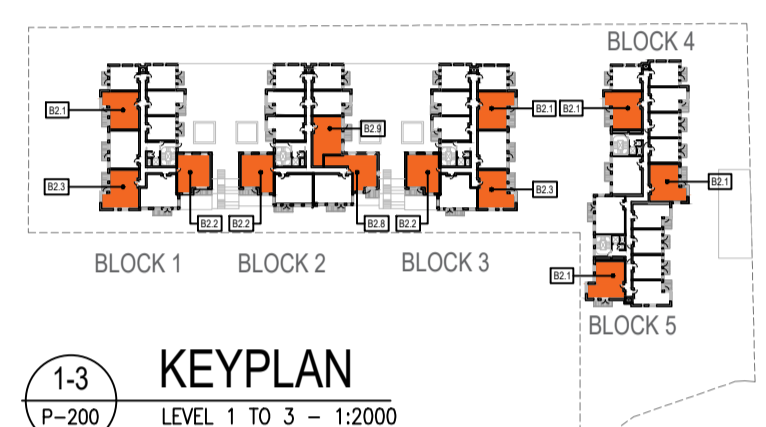
	REQUIRED (m ²)	PROVIDED (m ²)
STORAGE SPACE	6.0	6.4
PRIVATE AMENITY SPACE	7.0	11.5
AGGREGATE BEDROOM AREA	24.4	25.4
AGGREGATE KITCHEN / LIVING / DINING	30.0	38.3



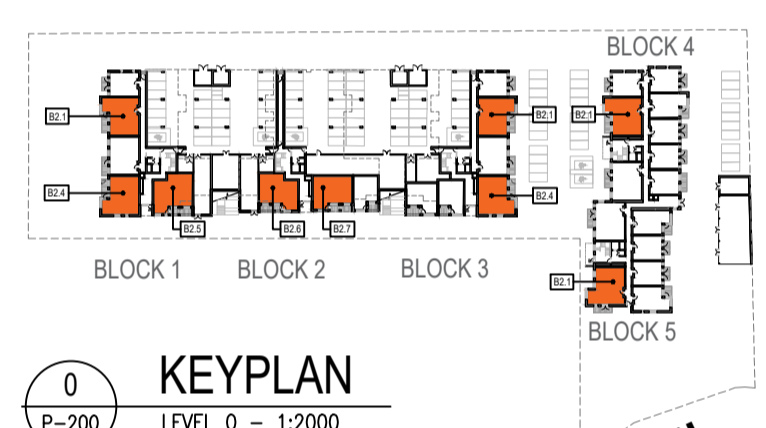
5 KEYPLAN
LEVEL 5 - 1:2000



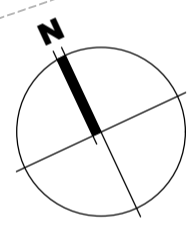
4 KEYPLAN
LEVEL 4 - 1:2000



1-3 KEYPLAN
LEVEL 1 TO 3 - 1:2000



0 KEYPLAN
LEVEL 0 - 1:2000



Notes
 1. Copyright Reserved
 2. Work to agreed dimensions only. Do not scale drawing
 3. The contractor is responsible for checking all levels and dimensions on site and shall refer all discrepancies to the Architect
 4. Where appropriate, for details of r.c. structure, or mechanical and electrical details, see Engineers drawings
 5. Proprietary items shall be fixed in strict accordance with manufacturers instructions.
 6. Sizes of proprietary items shall be checked with manufacturer.
 7. The contractor shall be responsible for the coordination of structure, finishes and services.

Issue Status	
Progress	
Planning Application	
Fire Cert	
Disability Cert	
Tender	
Construction	
As Built	
Information Only	

No.	Date	Revision	Initials
01	08/03/22	First Issue (Draft)	BKD
02	10/03/22	Issued for final revision	BKD
03	11/03/22	Issued for Planning	BKD

Project	Carlisle Site, Kimmage Residential Development
Drawing Title	Proposed Unit Types - Internal Layouts - Sheet 3 of 4
Drawing No	6269-P-203
Scale	1:50@A1
Rev	03
Drawn	BKD
Date	26/08/21

6-7 HARCOURT TERRACE, DUBLIN 2, IRELAND
 t +353 1 618 2400 f +353 1 676 7396
 www.bkd.ie
bkdarchitects
 BURKE-KENNEDY DOYLE